

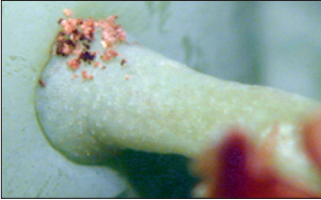
Insect pests of fruit
Cranberry fruitworm

Adult moths emerge during bloom, and monitoring traps can indicate timing and abundance of male moths. Females begin to lay white, oval eggs in the calyx of the berry soon after petal fall.

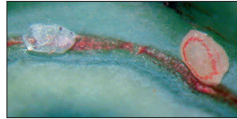


Cranberry fruitworm moths have distinctive white patches on their wings.

■ 13 mm



Larvae enter fruit where the stem meets the berry making a hole with frass around it.



CBFW eggs are oval and irregular, changing from white to yellow with age. The egg on the left (above) has hatched.

■ 1 mm

Larvae are green with a dark head and move between multiple berries as they develop. Berries are webbed together, and frass is often deposited, looking like sawdust trapped in the webbing.



Jerry Payne, USDA ARS.

Additional resources:
[Fruitworm details](#)